

# catrax

*plus*

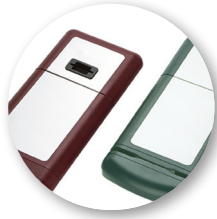


---

Catrax Plus is the most cost effective turnstile available in the market. This model stand out for being robust, versatile and highly reliable in a unique and attractive design. The unit was specially developed to ease the integration with other on-board security peripherals such as card readers, displays, keyboards, UPS/no-breaks and much more.

---

**digicon**



## SPECIAL DESIGN

Catrax Plus turnstile pedestal has rounded corners and plenty of internal space to facilitate the assembly of electronic and other types of components. As access is gained by a key lock, there are no exposed screws.

## SMOOTHER PASSAGE

Arms with a 90-degree passageway allow for a smooth turn and lessen the impact of the turnstile arm on patrons after each passage.

## CUSTOMIZED PRODUCTS

Catrax Plus top panel is manufactured in high impact engineering plastic and is available in black, Bordeaux red and green (special colors can be optionally supplied). The stainless steel cover allows for easy, low-cost configuration, and can be customized with the customer's own brand identity. The turnstile can also be equipped with bar code or magnetic card slot readers (optional).

## ACCESS PERMISSION

Catrax Plus can be configured with pictograms to inform access permission and detect direction of movement.

## EASY TO INTEGRATE AND MAINTAIN

The Catrax Plus turnstile comes with a U-shaped mounting drawer that can be easily removed or replaced on the rear top panel by a key lock, thus facilitating the assembly and maintenance of electronic components.

## DROP ARM SYSTEM

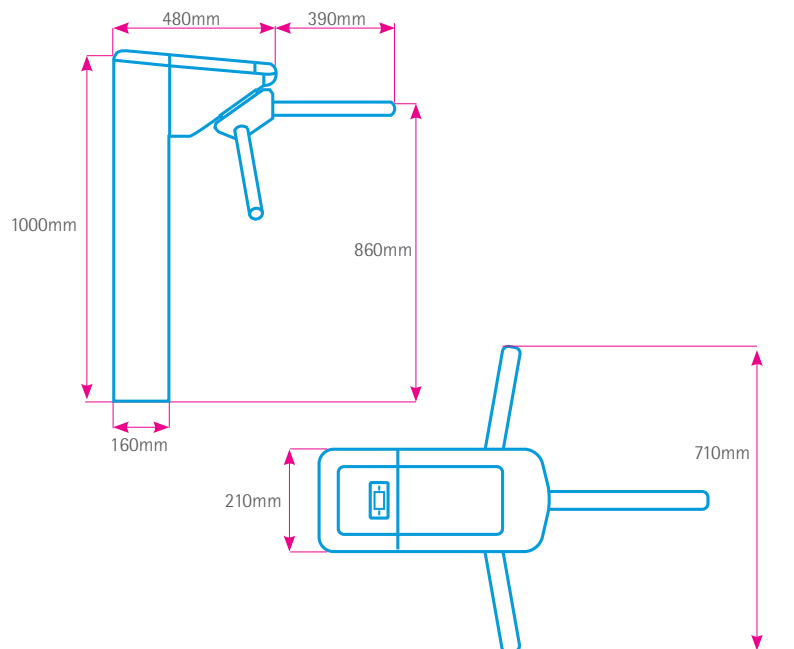
Through an anti-panic mechanism the arm drops leaving the access free. This special feature can be activated in emergency situations through a push-button, central control room or in the occurrence of a power failure. The Drop Arm Mechanism can optionally inform the system when the arm drops.

## RELIABILITY AND SAFETY

Optical sensors and electromagnets are used to activate locks, thus preventing mechanical wear and increasing equipment life.



## DIMENSIONS



Dimensions may vary up to 10mm.