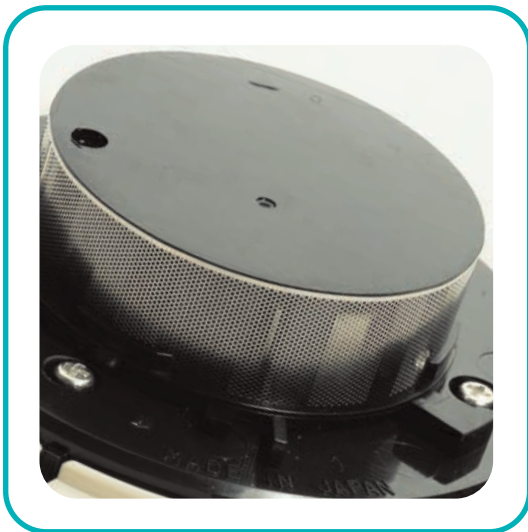


PHOTOELECTRIC SMOKE DETECTOR

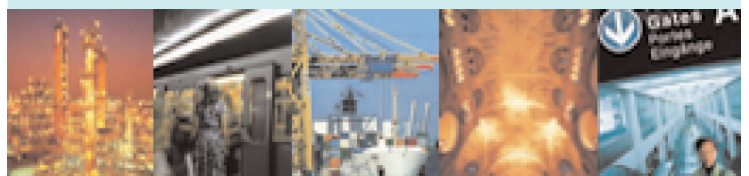


Model SLR-E3 is a Photoelectric Detector, which is fully compatible with the majority of existing Conventional systems.

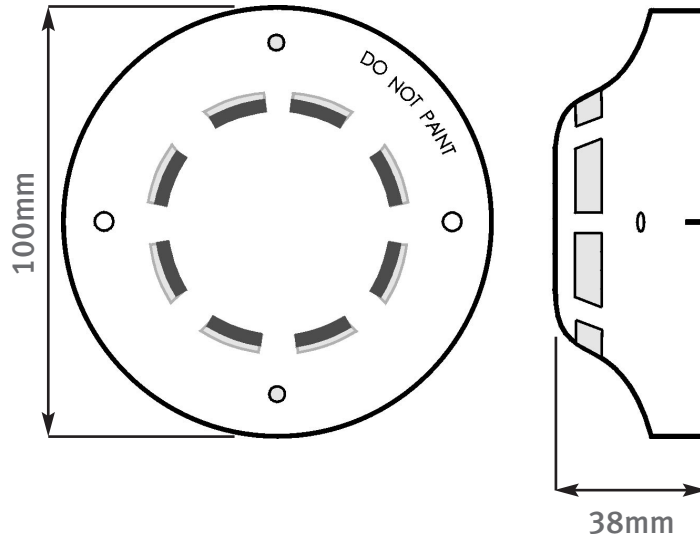
The SLR-E3 incorporates Hochiki's unique High Performance photoelectric smoke chamber removing the need to use Ionisation Smoke Detectors in the majority of applications. This also allows the Detector threshold level to be increased, thereby improving the signal to noise ratio and reducing the susceptibility to false alarms. An integral third terminal provides a remote indicator output.

The smoke chamber is easily removed or replaced for cleaning and utilises a unique baffle design which allows smoke to enter the chamber while keeping out ambient light.

- ▶ Removable, High Performance chamber
- ▶ Remote Indicator output
- ▶ Wide voltage range (9.5 ~ 30Vdc)
- ▶ Low profile design with one piece outer cover
- ▶ Twin fire LED's allow 360° viewing
- ▶ Range of mounting bases
- ▶ Approved by LPCB & VdS



DIMENSIONS



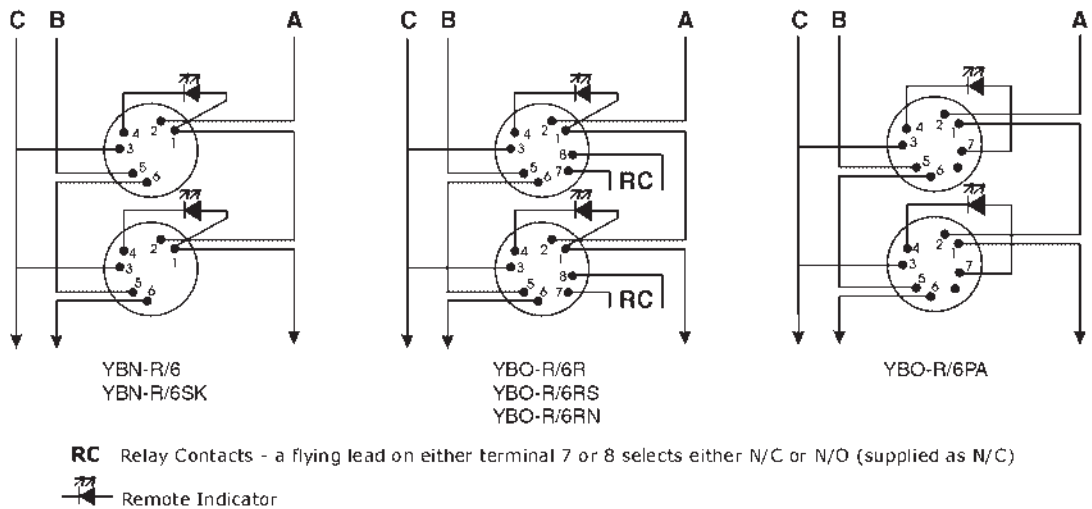
WIRING

KEY:

A Zone Wiring +ve

B Zone Wiring -ve

C Cable Screen



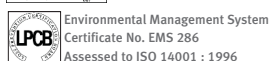
SPECIFICATION

Ordering Code	SLR-E3	
Disposable Chamber	Yes	
Operating Voltage	9.5 - 30Vd.c.	
Quiescent Current (typ)	35µA	
Maximum Current Alarm	40mA	
Remote Indicator Drive	20mA (max) / 9.5-14mA (typ)	
Operating Temperature Range	-10°C to + 50°C	
Storage Temperature Range	-30°C to + 60°C	
Maximum Humidity	95%RH - Non Condensing (at 40°C)	
Ingress Protection Rating	IP42	
Colour / Case Material	Ivory White / ABS	
Weight (g)	95	
Compatible Bases	YBN-R/6 YBN-R/6SK	YBO-R/6R, YBO-R/6RS YBO-R/6RN, YBO-R/6PA
Base Heights (mm)	8	
Base Fixing Centres (mm)	48 ~ 74	
Approvals	LPCB	EN54:2000 Part 7
	VdS	EN54:2000 Part 7 (G204043)

HOCHIKI EUROPE (UK) LIMITED
 Grosvenor Road, Gillingham Business Park,
 Gillingham, Kent, England ME8 0SA
 Telephone: +44 (0)1634 260133
 Facsimile: +44 (0)1634 260132
 e-mail (UK): sales@hochikieurope.com
 e-mail (Non UK): export@hochikieurope.com
 www.hochikieurope.com



Quality System
 Certificate No. 164
 Assessed to ISO9001



Environmental Management System
 Certificate No. EMS 286
 Assessed to ISO 14001 : 1996

Hochiki Europe (UK) Ltd. reserves the right to alter the specification of its products from time to time without notice. Although every effort has been made to ensure the accuracy of the information contained in this document it is not warranted or represented by Hochiki Europe (UK) Ltd. to be a complete and up-to-date description.

PART No. 9-5-0-244/ISS1/AUG04